



HYDRATION STATIONS

Bottle Fillers & Drinking Fountains





WATER WHERE YOU NEED IT



MAINS-FED COOLERS



COUNTERTOP DISPENSERS



BOTTLED WATERCOOLERS



DRINKING FOUNTAINS + BOTTLE FILLERS

OASIS is the worldwide leader of water-friendly solutions. We design and manufacture an array of product, specialising in bottled + mains-fed watercoolers, bottle fillers, drinking fountains; with technologies to filter and disinfect water for the safest hydration.

CONTENTS

SECTORS	Trusted Globally	4
	Installations	5
HIGHLIGHTS	Electronic	6
	Mechanical	7
FEATURES	Quasar	8
	Trifecta of Hygiene	10
	Certifications	11
BOTTLE FILLERS	Outdoor	12
	Wall-Mount	In-Wall 15
		On-Wall 15
	Floor Standing	Against-Wall 18
		Free Standing 20
	Conversion Kit	21
BOTTLE FILLER DRINKING FOUNTAIN COMBO	On-Wall type (single & double)	22
	In-A-Wall	24
DRINKING FOUNTAINS	On-Wall Sink type (single & double)	26
	Modular type	Refrigerated 28
		Non-Refrigerated 30
	Free Standing	32
	Bottle Filler Conversion Kit	34
ACCESSORIES		35
INSTALLATION KIT		36
FILTERS		37

Trusted Globally



TRANSPORTATION HUBS



ATHENS
INTERNATIONAL AIRPORT
ELEFTHERIOS VENIZELOS

2N2
LISBON
AIRPORT

CORPORATE



TAJ MAHAL

DISNEYLAND
PARIS

FITNESS + SPORTS FACILITIES



LORD'S
THE HOME OF CRICKET



EDUCATION



SAPIENZA
UNIVERSITÀ DI ROMA

American School
of The Hague



HEALTHCARE



ASSISTANCE
PUBLIQUE  **HÔPITAUX**
DE PARIS

INSTALLS ACROSS A MULTITUDE OF SECTORS...

OASIS' Pressure Watercooler's cater to an endless variety of environments. Predominantly in public and social areas that share high volume of users on a daily basis. This is where product demand and sanitisation risks are both at their peaks.

With this in mind, **OASIS** continually ensures that our products are the most hygienic and healthful. With the incorporation of advanced technology and by accomplishing design & engineering feats, means that ease of sanitisation has never been easier.

Our units are sustainable, with reliability you can count on - just like our continuous support system we provide before and after sales.



**Over 100 years
of high quality design
and manufacturing.**

ELECTRONIC

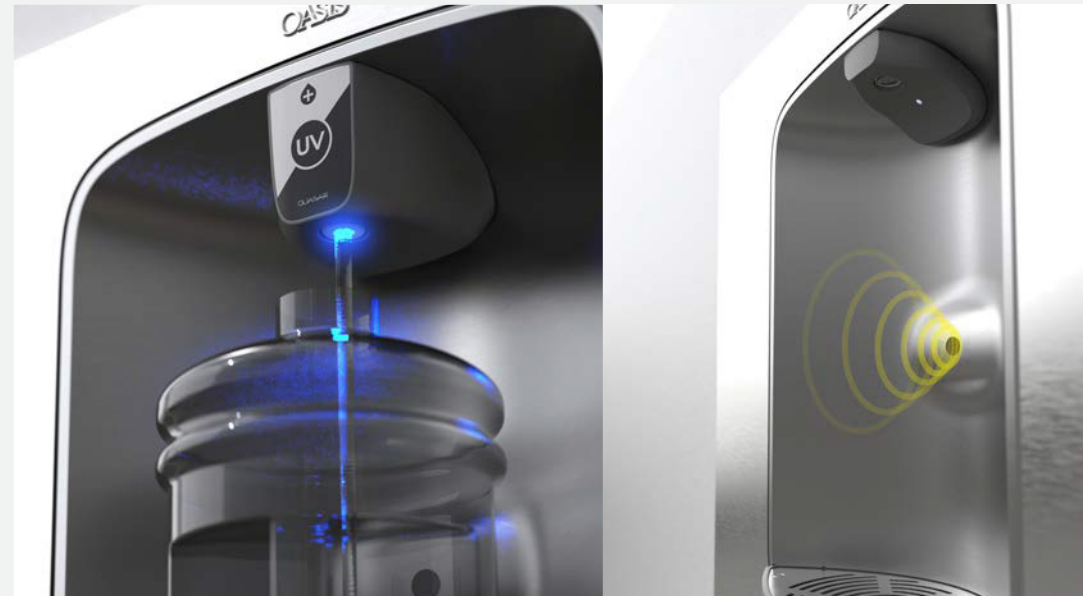
HIGHLIGHTS

TRIFECTA OF HYGIENE

- Contactless Activation: Eliminates potential cross-contamination
- Quasar UVC-LED: UVC-LED Technology at the point-of-dispense
- Freshield: Freshield utilises a silver-based antimicrobial compound

WATER

- Bottle Counter: Illustrates how many plastic bottles are saved from landfill
- Filtration w/ Filter Status Light: Know when your filter is working, and when it is ready to be replaced (Filters available with Mechanical units, Status Light feature of Electronic models only)
- Chilled Water: Choose the water of your choice, from 90 LPH, 60 LPH or ambient (also available in Mechanical model)
- Fully Mechanical Cartridge: Allows. access to fresh drinking water even when electrical power is lost.



MECHANICAL

HIGHLIGHTS

HYGIENE

- Freshield*: Freshield utilises a silver-based antimicrobial compound
- Filtration*: Benefit from clean drinking water

BENEFITS FOR PREMISES

- More flexible installation locations - Requires water mains only
- Reduce Carbon Footprint: No electricity required; No refrigerant required.
- Tilt 'n' Tether*: Bottle filler now tips forward to allow for easier access to filters
- Quick and Easy access by removing only two screws
- Manual Activation: Push Button activation

*Available in both electronic and mechanical models (VersaFiller models only)



QUASAR

UVC-LED WATER TREATMENT



The OASIS® QUASAR UVC-LED Water Treatment system uses UVC-LEDs to protect people from Legionella and other harmful pathogens. Treating water at the point of dispense, QUASAR uses Light Emitting Diodes (LEDs) to generate high levels of UV photons. The rays are directed at viruses, bacteria, and other pathogens within drinking water to render those pathogens harmless in seconds.

UVC-LED TECHNOLOGY

UV represents wavelengths that fall between visible light and x-ray on the electromagnetic spectrum. UV photons penetrate harmful microscopic organisms and damage the DNA, rendering them incapable of reproduction.

UVC-LED technology is used to biologically destroy harmful bacteria and viruses, without the use of chemicals or mercury-based lamps. The UVC-LEDs allow for instant full-intensity power, unlimited cycling, and no heat transfer to the water.

**QUASAR:
EXCLUSIVELY
THROUGH OASIS**



Quasar VS Traditional UV Lamps



PATHOGEN CONTROL

UVC-LED technology disinfects the water when it is being dispensed, eliminating the chance of recontamination and reducing over 99.99% of pathogens. Including legionella, chlorine resistant micro-organisms such as cryptosporidium and Giardia

MERCURY CONTENT

UVC-LED technology far outpaces traditional UV technology. Conventional UV lamps typically use between 5-200 mg of mercury per lamp, often requiring routine replacement due to the fragile quartz tube. UV LED lamps on the other hand are a much safer alternative as it is mercury-free.

WATER ALTERATION

Moreover, conventional UV while superior over chemical solutions, has a higher impact on the water temperature and causes fouling; altering the taste of water. In contrast, LED technology is easier to maintain and use, with a longer lamp replacement interval.

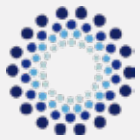
LONGEVITY

UVC-LED technology is easier to maintain and use, with a longer lamp replacement interval. UVC-LEDs will last ten years and more. Making them cheaper to run than traditional lamps.

PROTECTION

UVC-LEDs are only on during water dispense or standby mode for constant protection. UVC-LEDs pulse on every 10 minutes for a short duration to keep the dispense point sanitised





FRESHIELD

Freshield® technology, utilizing a silver-based antimicrobial compound to protect surfaces from discoloration, odors, and degradation.

TRIFECTA OF HYGIENE

CONTACTLESS

Solenoid-activated water flow for a hygienic, hands-free operation. Abandon the bubbler for safe, touch-free operation

QUASAR

QUASAR

UVC-LED at the point-of-dis - pense, neutralizing 99.99% of pathogens.

CERTIFICATIONS



ISO 9001:2008
Quality management systems

ISO 14001:2004
Environmental management systems

ISO 22000:2005
Food safety management systems



CCC
Approval from the Chinese MOH to sell their products in China.



SASO
Certificate of Conformity for Exports to Saudi Arabia



UL
UL Low Lead Certification

2011/65/EU
RoHS Directive

2014/35/EU
Low Voltage Directive

2014/30/EU
Electromagnetic
Compatibility Directive



ACS (Attestation de Conformité Sanitaire)
The material safety approval required for materials and products in contact with drinking water in France.



CE
Independently CE approval for all 230V products manufactured for European market
(Certificates: NTR-CCA, CB, EMC, Statements on conformity with European Directives LVD and EMC)



NSF REG4 Certification
certifies water fittings and non-metallic materials that are in contact with drinking water are in compliance with the UK's regulations and byelaws.



WRAS
The Water Regulations Advisory Scheme (WRAS) approval is required for many drinking water treatment devices and other products sold in the U.K. and Northern Ireland.

Regulation EU 202/2014
Relating to plastic materials and articles intended to come into contact with food

Regulation EC 1935/2004
Relating to materials and articles intended to come into contact with food

SUSTAINABLE HYDRATION with OASIS Outdoor Family Bottle Fillers

Eco-friendly | Durable | Easy to Install



BOTTLE FILLERS

OUTDOOR



Oasis Outdoor units are perfectly paired with the industry exclusive outdoor filter. Suitable for outdoor environments of up to 50°C

STANDARD FEATURES

- Requires no electricity, for easy installation and maximum flexibility in placement.
- Manual Activation via the push-button vandal-resistant and corrosion-resistant cabinetry ensure durability in any environment.
- Bottle filler designed with open-sided alcove for easy access,
- Available in the following standard colours:
 - White
 - Forest Green
 - Navy



- Pre-installed with the Oasis Outdoor Filter
- The Anchor Assembly is the necessary accessory to secure your Oasis Outdoor Bottle Filler and Outdoor Dual to the ground.
 - Dimension: 14" x 14" x 14-1/4"
 - Weight: 36lbs (shipping)



Bottle Filler + Drinking Fountain Combo

220-240 Volts, 50/60 Hz

Rated Watts
Net Weight
Dispense Height
Dimensions

OUTDOOR BOTTLE FILLER

-
31.2 kg
380 mm
1600 (H) x 355.6 (Base diameter) mm

OUTDOOR WALL-MOUNT

-
9 kg
380 mm
788 (H) x 216 (W) x 514 (D) mm

OUTDOOR DUAL

-
52 kg
380 mm
1600 (H) x 1195 (W) x 355.6 (D) mm

*All performance data measured with 18°C inlet water temperature. Specifications subject to change without notice. ANSI/NSF 61 and CABO/ANSI A117.1 are applicable to all models.



BOTTLE FILLERS

AQUAPOINTE HYDRATION STATION

STANDARD FEATURES

- Floor Standing (Against-a-wall)
 - Contactless sensor for touch-free activation with 20 second shut-off timer
 - Large Alcove to fit most sports bottles
 - Built in drain - no drip tray to empty
 - High efficiency cooling tank and coil
 - (Refrigerated model only)
Energy-Efficient refrigeration system powers 'ON' only
 - when in use or if water temp increases
 - Removable drip tray grill for easy cleaning
 - Heavy duty galvanized steel frame
 - Programmable automatic shut off timer
 - Refrigerant R-290a (Refrigerated model only)
 - Built in bottle counter, filter monitor and programmable time-out feature
 - White painted standard finish
 - Access Door for easy maintenance; simple access to filters and chiller
 - Litter-Resistant sloped top
- Available in customizable colours and wrappings (MOQ & Leadtimes may vary)



		*	*		*	*		*	*	
	MW8BQY RW	MW2BQY RW	MW8BQY RW	MW8BFY RW	MW2BFY RW	MW8BFY RW	MW8SBFY RW	MW2SBFY RW	MW8SBFY RW	
10° C Drinking water/ 21° C Ambient air temp. 220-240 Volts, 50/60 Hz	Rated Capacity	-	19.5 LPH	60 LPH	-	19.5 LPH	60 LPH	19.5 LPH	60 KPH	
	Rated Watts	7 W	102 W	347 W	7	102 W	347 W	95 W	340 W	
	Net Weight	49 kg	64 kg	73 kg	49 kg	64 kg	73 kg	64 kg	73 kg	
	Dispense Height	292 mm	292 mm	292 mm	330 mm	330 mm	330 mm	330 mm	330 mm	
	Dimensions	1505 (H) x 700 (W) x 350 (D) mm								

*All performance data measured with 18°C inlet water temperature. Specifications subject to change without notice. ANSI/NSF 61 and CABO/ANSI A117.1 are applicable to all models.

Oasis Floor Standing (against a wall) units provide ample space for potential branding.

Emphasise sustainable hydration and visibly partner your brand with this green initiative. Or, if your premise is being sponsored, these units are the perfect opportunity for their brand to be promoted.

MOQ required for wrapping services. Speak with your local Sales Representative for more information.

PUSH YOUR BRAND'S VISIBILITY

OR COMMERCIALISE
YOUR SPACE



SUSTAINABLE
HYDRATION

REFILL
REFRESH
REPEAT



SUSTAINABLE &
CUSTOMISABLE
PRODUCT

REFILL
REFRESH
REPEAT



BOTTLE FILLERS

WALL MOUNT

STANDARD FEATURES

- Built-in 100 micron strainer stops particles before they enter the waterway
- Large Alcove to fit most sports bottles
- Built in drain - no drip tray to empty
- High efficiency cooling tank and coil (Refrigerated model only)
- Energy-Efficient refrigeration system powers 'ON' only when in use or if water temp increases
- Waterways are Lead-Free in materials & construction
- Heavy duty galvanized steel frame
- Brushed stainless steel finish
- Programmable automatic shut off timer
- Refrigerant R-290a (Refrigerated model only)

Logos permanently formed into the stainless-steel wrapper

QUASAR available (Electronic models only)

Built-in filter monitor and bottle counter

Contactless activation (Manual Available)

Built in panel locks for easy access to chiller and filtration



ON-A-WALL SEMI-RECESSED



	MW8EBQY	MWEBQY	MW8EBFY	MWEBFY	MW8SBFY	MWSBF
Rated Capacity	60 LPH	-	60 LPH	-	60 LPH	-
Rated Watts	347 W	7 W	347 W	7 W	340 W	-
Net Weight	35 kg	12 kg	35 kg	12 kg	35 kg	12 kg
Dispense Height	292 mm	292 mm	330 mm	330 mm	330 mm	330 mm
Dimensions	1035 (H) x 502 (W) x 46 (D) (287recessed) mm					

ON-A-WALL SURFACE MOUNT



	MWSM8EBQY	MWSMEBQY	MW8SMEBFY	MWSMEBFY	MW8SMSBFY	MWSMSBF
Rated Capacity	60 LPH	-	60 LPH	60 LPH	60 LPH	-
Rated Watts	347 W	7 W	347 W	347 W	347 W	-
Net Weight	35 kg	12 kg	35 kg	35 kg	35 kg	12 kg
Dispense Height	292 mm	292 mm	330 mm	330 mm	330 mm	330 mm
Dimensions	1051(H) x 530 (W) x 150 (D) (198 recessed for chiller) mm					

ON-A-WALL SURFACE MOUNT



	PN8EBQY	PN8EBFY	PWSMEBQY	PWSMEBFY	PWSMSBF
Rated Capacity	60 LPH	60 LPH	-	-	-
Rated Watts	7 W	7 W	7 W	7 W	-
Net Weight	25.4 kg	25.4 kg	5 kg	5 kg	5 kg
Dispense Height	292 mm	330 mm	292 mm	330 mm	330 mm
Dimensions	960.2 (H) x 453.2 (W) x 331.8 (D) mm		630 (H) x 413 (W) x 144 (D) mm		

*All performance data measured with 18°C inlet water temperature. Specifications subject to change without notice. ANSI/NSF 61 and CABO/ANSI A117.1 are applicable to all models.

BOTTLE FILLERS

FLOOR STANDING [FREE STANDING]

STANDARD FEATURES

- Contactless sensor for touch-free activation with 20 second shut-off timer
- Large Alcove to fit most sports bottles
- Built in drain - no drip tray to empty
- High efficiency cooling tank and coil (Refrigerated model only)
- Energy-Efficient refrigeration system powers 'ON' only when in use or if water temp increases
- Removable drip tray grill for easy cleaning
- Heavy duty galvanized steel frame
- Programmable automatic shut off timer
- Refrigerant R-290a (Refrigerated model only)
- Built in bottle counter, filter monitor and programmable time-out feature
- Durable brushed stainless steel finish
- 2-Stage Filtration system provides great tasting filtered water (PF20FSEBQY model only)



	PCPEBQY	PCP10EBQY	PCPEBFY	PCP10EBFY
10° C Drinking water/ 21° C Ambient air temp. 220-240 Volts, 50/60 Hz				
Rated Capacity	-	60 LPH	-	60 LPH
Rated Watts	7 W	102 W	347 W	7
Net Weight	49 kg	64 kg	73 kg	49 kg
Dispense Height	292 mm	292 mm	330 mm	330 mm
Dimensions		1505 (H) x 700 (W) x 350 (D) mm		

*All performance data measured with 18°C inlet water temperature. Specifications subject to change without notice. ANSI/NSF 61 and CABO/ANSI A117.1 are applicable to all models.

RETROFIT KIT

DRINKING FOUNTAIN TO COMBO

STANDARD FEATURES

Designed to fit existing OASIS P8AC and select competitors' units

- Large Alcove to fit most sports bottles
- Built in drain - no drip tray to empty
- Heavy duty galvanized steel frame
- Waterways are Lead-Free in materials and construction
- Brushed stainless steel finish



10° C Drinking water/
21° C Ambient air temp.
220-240 Volts, 50/60 Hz

Rated Capacity
Rated Watts
Net Weight
Dispense Height
Dimensions



PWEBQY

-
7 W
49 kg
292 mm



PWEBFY

10 LPH
102 W
64 kg
292 mm
480 (H) x 413 (W) x 144 (D) mm

PWSBF

60 LPH
347 W
73 kg
292 mm

*All performance data measured with 18°C inlet water temperature. Specifications subject to change without notice. ANSI/NSF 61 and CABO/ANSI A117.1 are applicable to all models.

COMBO

ON-A-WALL

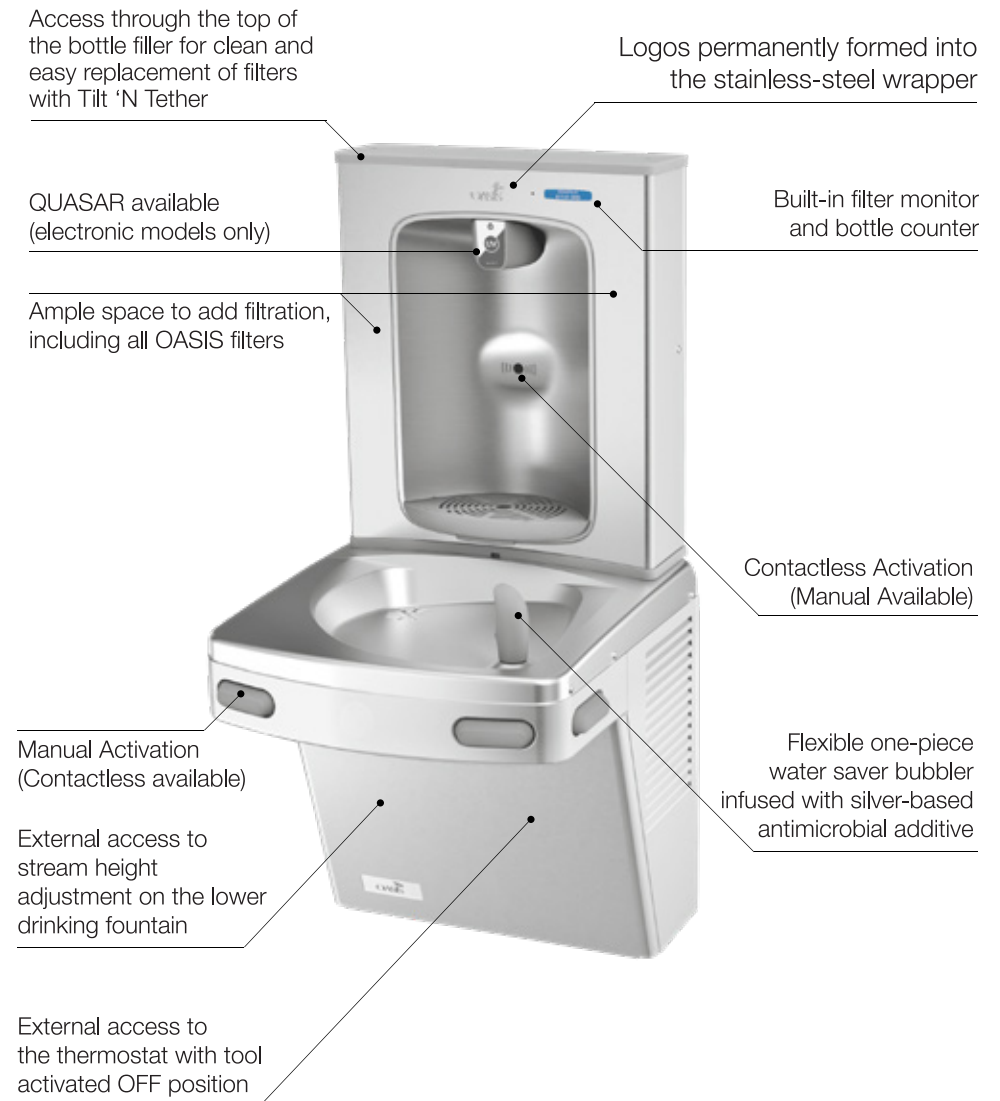
STANDARD FEATURES

BOTTLE FILLER

- VersaFiller Bottle Fillers
- Built-in 100 micron strainer stops particles before they enter the waterway
- Large Alcove to fit most sports bottles
- Built in drain - no drip tray to empty
- Water-saver bubbler reduces waste water by 50%
- High efficiency cooling tank and coil (Refrigerated model only)
- Energy-Efficient refrigeration system powers 'ON' only when in use or if water temp increases
- Waterways are Lead-Free in materials & construction
- Heavy duty galvanized steel frame
- Ample space within the bottle filler cabinet to add filtration, including all OASIS filters
- Brushed stainless steel finish
- Programmable automatic shut off timer

DRINKING FOUNTAIN

- Versacooler Drinking Fountain
- Antimicrobial flexible bubbler guard
- Basin is designed to eliminate splashing/standing water
- Water-saver bubbler reduces waste water by 50%
- Antimicrobial flexible bubbler guard
- External stream height adjustment
- High efficiency cooling tank and coil (Refrigerated model only)
- Energy-Efficient refrigeration system powers 'ON' only when in use or if water temp increases



CONTACTLESS COMBO



P8EBQTY	PEBQTY	P8EBFTY	PEBQTY
60 LPH	-	60 LPH	-
475 W	7 W	475 W	7 W
31 kg	16 kg	31 kg	16 kg
292 mm	292 mm	330 mm	292 mm

CONTACTLESS + MECHANICAL



P8EBQY	PEBQY	P8EBFY	PEBFY	PV8EBFY	PVEBFY
60 LPH	-	60 LPH	-	60 LPH	-
475 W	7 W	475 W	7 W	475 W	7 W
31 kg	16 kg	31 kg	16 kg	31 kg	16 kg
292 mm	292 mm	330 mm	330 mm	330 mm	330 mm

960 (H) x 413 (W) x 473 (D) mm

MECHANICAL COMBO



P8SBFY	PSBF	PV8SBFY	PVSBF
60 LPH	-	60 LPH	-
450 W	-	475 W	-
31 kg	16 kg	31 kg	16 kg
330 mm	330 mm	330 mm	330 mm

10° C Drinking water/
21° C Ambient air temp.
220-240 Volts, 50/60 Hz

Rated Capacity
Rated Watts
Net Weight
Dispense Height
Dimensions



P8EBQSLTTY	PEBQSLTTY	P8EBFSLTTY	PEBFSLTTY
60 LPH	-	60 LPH	-
475 W	7 W	475 W	7 W
43 kg	27 kg	43 kg	27 kg
292 mm	292 mm	330 mm	330 mm



P8EBFLSY	PEBFLSY	PV8EBFLSY	PVEBFLSY
60 LPH	-	60 LPH	-
475 W	7 W	475 W	7 W
43 kg	27 kg	43 kg	27 kg
330 mm	330 mm	330 mm	330 mm

960 (H) x 895 (W) x 473 (D) mm



P8SBFLSY	PSBFSL
60 LPH	-
450 W	-
43 kg	27 kg
330 mm	330 mm



PV8SBFLSY	PVSBFSL
60 LPH	-
450 W	-
43 kg	27 kg
330 mm	330 mm

10° C Drinking water/
21° C Ambient air temp.
220-240 Volts, 50/60 Hz

Rated Capacity
Rated Watts
Net Weight
Dispense Height
Dimensions

*All performance data measured with 18°C inlet water temperature. Specifications subject to change without notice.
ANSI/NSF 61 and CABO/ANSI A117.1 are applicable to all models.

COMBO

IN-A-WALL [RECESSED]

STANDARD FEATURES

BOTTLE FILLER

- AquaPointe Bottle Filler
- Built-in 100 micron strainer stops particles before they enter the waterway
- Large Alcove to fit most sports bottles
- Built in drain - no drip tray to empty
- High efficiency cooling tank and coil (Refrigerated model only)
- Energy-Efficient refrigeration system powers 'ON' only when in use or if water temp increases
- Waterways are Lead-Free in materials/construction
- Heavy duty galvanized steel frame
- Brushed stainless steel finish
- Programmable automatic shut off timer

DRINKING FOUNTAIN

- Radii Drinking Fountain
- Flexible one piece water saver bubbler guard
- Built-in 100 micron strainer stops particles
- Waterways are Lead-Free in materials/construction
- Antimicrobial flexible bubbler guard
- Heavy duty galvanized steel frame
- Brushed stainless steel finish
- High efficiency cooling tank and coil (Refrigerated model only)
- Energy-Efficient refrigeration system powers 'ON' only when in use or if water temp increases
- Built in Panel Locks for easy access to chiller and filtration





M8WREBFY

MWREBFY

M8WRSBFY

MWRSBF

M8EBFY

MEBFY

M8SBFY

MSBF

M8CREBFY

M8CRSBFY

10° C Drinking water/
21° C Ambient air temp.
220-240 Volts, 50/60 Hz

Rated Capacity
Rated Watts
Net Weight
Dispense Height
Dimensions

60 LPH	-	60 LPH	-	90 LPH	-	60 LPH	-	60 LPH	-	60 LPH
347 W	7 W	340 W	-	347 W	7 W	340 W	-	347 W	-	340 W
64 kg	22.6 kg	73 kg	22.2 kg	73 kg	73 kg	73 kg	49 kg	84 kg	82 kg	82 kg
330 mm	330 mm	330 mm	330 mm	330 mm	330 mm	330 mm	330 mm	330 mm	330 mm	330 mm
1143 (H) x 502 (W) x 483 (D) (287 recessed) mm										

1035 (H) x 1003 (W) x 483 (D) (287 recessed) mm



M140REBFY

M140RSBF

MMRSLEBFY

MMRSLSBF

10° C Drinking water/
21° C Ambient air temp.
220-240 Volts, 50/60 Hz

Rated Capacity
Rated Watts
Net Weight
Dispense Height
Dimensions

-	-	-	-
7 W	-	7 W	-
19 kg	21 kg	39 kg	32 kg
330 mm	330 mm	330 mm	330 mm
591(H) x 502 (W) x 482 (D) (90 recessed) mm			

-	-
7 W	-
39 kg	32 kg
330 mm	330 mm
591 (H) x 1003 (W) x 470 (D) (89 recessed) mm	

*All performance data measured with 18°C inlet water temperature. Specifications subject to change without notice.
ANSI/NSF 61 and CABO/ANSI A117.1 are applicable to all models.

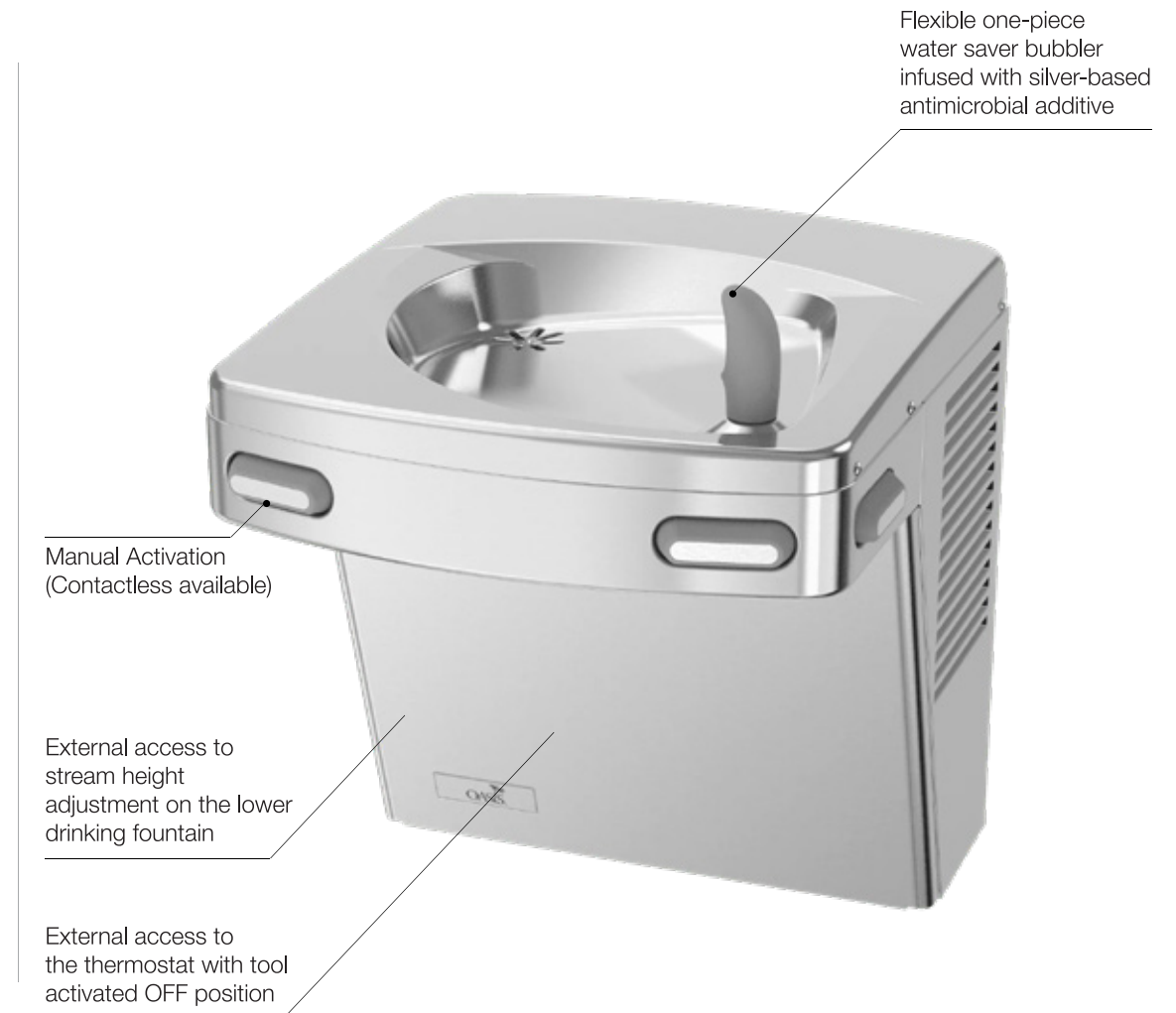


DRINKING FOUNTAINS

ON-WALL, SINK TYPE

STANDARD FEATURES

- Built-in 100 micron strainer stops particles before they enter the waterway
- ADA compliant for both adult or child when properly installed
- Stainless steel top designed to eliminate splashing and standing water ANSI/NSF 61
- Water-saver bubbler reduces waste water by 50%
- Antimicrobial flexible bubbler guard
- External stream height adjustment
- Brushed stainless steel finish
- Heavy duty galvanized steel frame
- Refrigerant R-290a (Refrigerated models only)
- High efficiency cooling tank and coil
- (Refrigerated models only)
- Contactless Activation with 30 seconds auto shut-off (Contactless models)
- Vandal Resistant front push button with Tamper Proof screws (Vandal Resistant Model)



CONTACTLESS COMBO

CONTACTLESS + MECHANICAL

MECHANICAL COMBO



10° C Drinking water/ 21° C Ambient air temp. 220-240 Volts, 50/60 Hz	Rated Capacity	P8ACTY	PGACT	P8ACY	PGAC	PV8ACY	PVAC	PV8ACY-14G
	Rated Watts	60 LPH	-	60 LPH	-	60 LPH	-	60 LPH
	Net Weight	475 W	7 W	475 W	7 W	475 W	7 W	475 W
	Dimensions	31 kg	31 kg	31 kg	16 kg	31 kg	16 kg	31 kg
		480 (H) x 448 (W) x 473 (D) mm	480 (H) x 448 (W) x 473 (D) mm	480 (H) x 448 (W) x 473 (D) mm	480 (H) x 448 (W) x 473 (D) mm	480 (H) x 448 (W) x 473 (D) mm	480 (H) x 451 (W) x 483 (D) mm	



10° C Drinking water/ 21° C Ambient air temp. 220-240 Volts, 50/60 Hz	Rated Capacity	P8ACSLTTY	PACSLTTY	P8ACSLY	PACSL	PV8ACSLY	PVACSL	PV8ACSLY-14G
	Rated Watts	60 LPH	-	60 LPH	-	60 LPH	-	60 LPH
	Net Weight	475 W	7 W	475 W	7 W	475 W	7 W	475 W
	Dimensions	43 kg	27 kg	43 kg	27 kg	43 kg	27 kg	43 kg
					960 (H) x 895 (W) x 473 (D) mm			

*All performance data measured with 18°C inlet water temperature. Specifications subject to change without notice. ANSI/NSF 61 and CABO/ANSI A117.1 are applicable to all models.

DRINKING FOUNTAINS

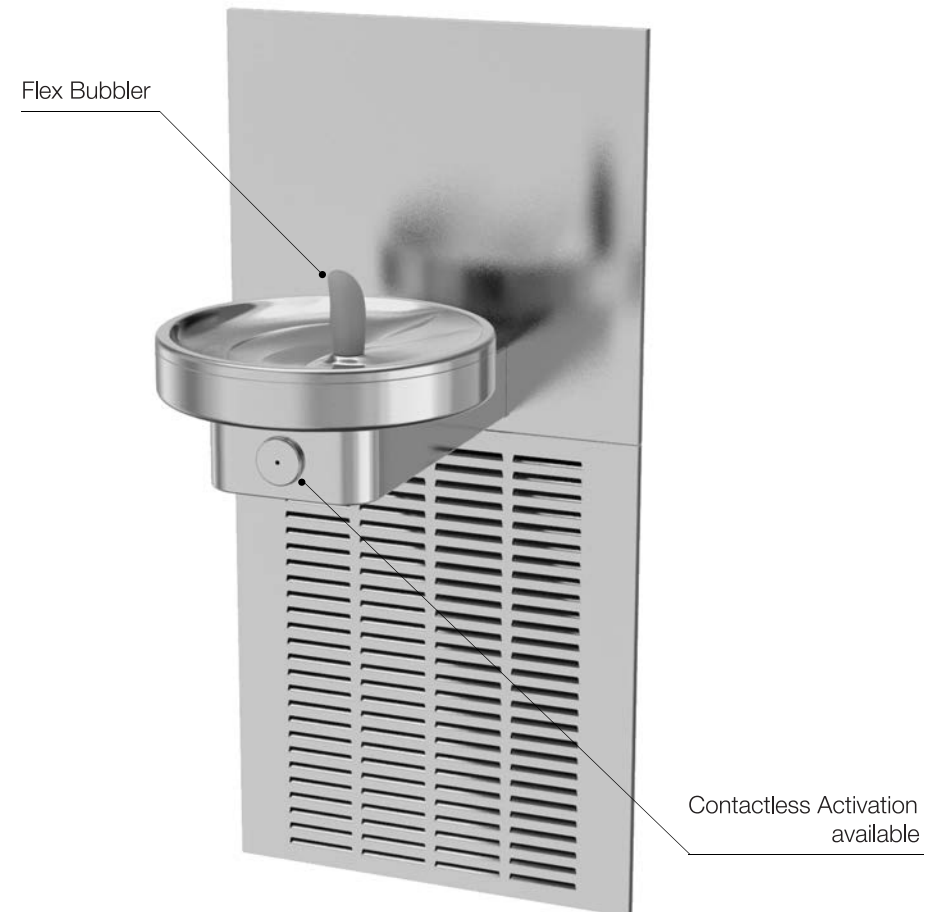
IN-WALL, MODULAR & REFRIGERATED TYPE

STANDARD FEATURES

- Flex bubbler
- Waterways are Lead-Free in materials and construction
- Stainless steel finish with heavy-duty galvanized steel frame
- Built in 100 micron strainer stops particles before they enter the waterway
- Contactless models are sensor equipped for automatic operation
- Bi-level models are field reversible

RADII MODELS

- ADA Compliant when installed in an alcove or with right and left wing walls
- Water flow stops after 30 seconds if user does not move away





M8WREEY

60 LPH
340
45 kg
1035 (H) x 502 (W) x 483 (D) (287 recessed) mm



M8WRYY

60 LPH
340
45 kg



M8CRY

60 LPH
340
61 kg
1035 (H) x 1003 (W) x 483 (D) (287 recessed) mm

10° C Drinking water/
21° C Ambient air temp.
220-240 Volts, 50/60 Hz

Rated Capacity
Rated Watts
Net Weight
Dimensions



M8SBEEY

60 LPH
550 W
44 kg
1035 (H) x 502 (W) x 483 (D) (287 recessed) mm



M8SBPMY

60 LPH
340 W
44 Kg



M8SCPMY

60 LPH
340 W
49 kg
1035 (H) x 1003 (W) x 483 (D) (287 recessed) mm



PLF8FPMY

60 LPH
340 W
42 kg



PLF8FPMCDY

60 LPH
340 W
44 kg
1410 (H) x 610 (W) x 13 (D) (275 recessed) mm

10° C Drinking water/
21° C Ambient air temp.
220-240 Volts, 50/60 Hz

Rated Capacity
Rated Watts
Net Weight
Dimensions

DRINKING FOUNTAINS

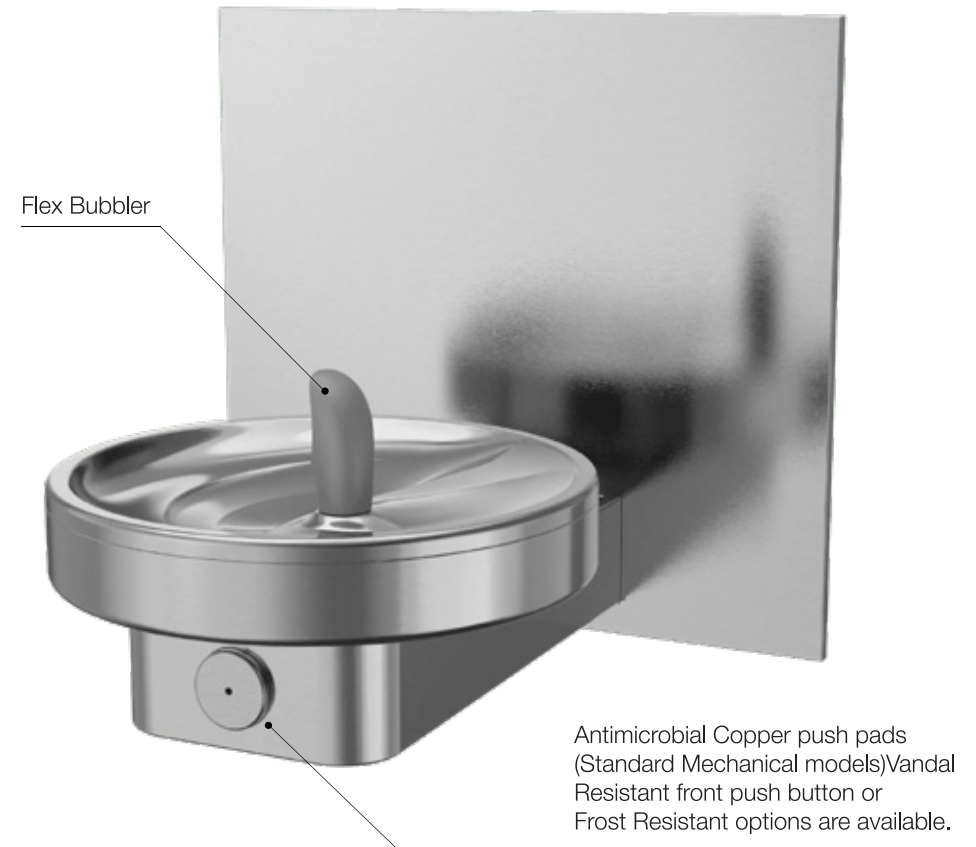
MODULAR & NON-REFRIGERATED TYPE

STANDARD FEATURES

- Flex bubbler
- Waterways are Lead-Free in materials and construction
- Antimicrobial copper touch points
- Stainless steel finish with heavy-duty galvanized steel frame
- Modular fountains include back panel(s) and mounting frame(s)
- Frost proof fountains include back panel and control box assembly
- Built in 100 micron strainer stops particles before they enter the waterway

14 GAUGUE MODELS

- 14 gauge stainless steel construction
- Vandal resistant bubbler keyed into position
- Single vandal resistant mechanical activation
- Brass P-Trap
- Vandal resistant panel fasteners
- Stream height adjustment

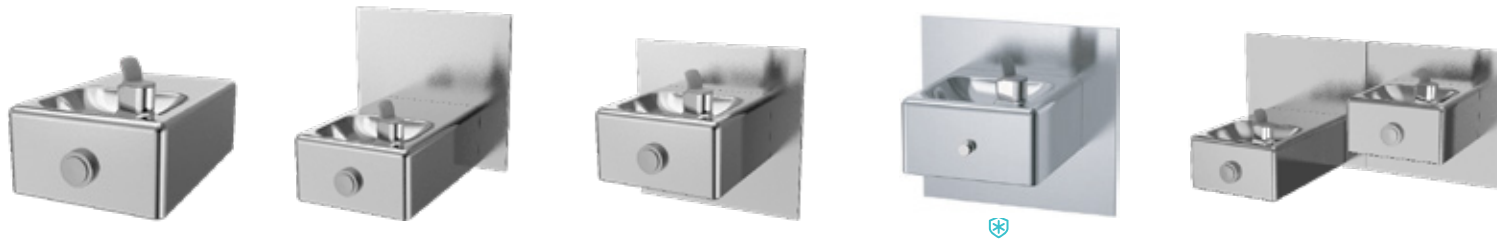




10° C Drinking water/ 21° C Ambient air temp. 220-240 Volts, 50/60 Hz	Rated Capacity	F140R	-	M140R	-	M140RFZ	-	MMRS	-
	Rated Watts	-	-	-	-	-	-	-	-
	Net Weight	8.6 kg	14 kg	21 kg	29 kg				
	Dimensions	209 (H) x 502 (W) x 470 (D) mm	464 (H) x 502 (W) x 483 (D) mm	466 (H) x 502 (W) x 483 (D) mm	464 (H) x 1003 (W) x 483 (D) mm				



10° C Drinking water/ 21° C Ambient air temp. 220-240 Volts, 50/60 Hz	Rated Capacity	F140PM-14G	-	M140PM-14G	-	MSSLPM-14G	-
	Rated Watts	-	-	-	-		
	Net Weight	11 kg	29kg	58 kg			
	Dimensions	276 (H) x 305 (W) x 473 (D) mm	464 (H) x 502 (W) x 473 (D) mm	457 (H) x 914 (W) x 473 (D) mm			



10° C Drinking water/ 21° C Ambient air temp. 220-240 Volts, 50/60 Hz	Rated Capacity	F140PM	-	M140PM	-	M110PM	-	M110FZ	-
	Rated Watts	-	-	-	-				
	Net Weight	5.9kg	13 kg	9kg	19.5 kg				
	Dimensions	274 (H) x 330 (W) x 483 (D) mm	464 (H) x 502 (W) x 483 (D) mm	464 (H) x 502 (W) x 410 (D) mm					

Rated Capacity	MSSLPM	-
Rated Watts	-	-
Net Weight	26.8kg	
Dimensions	464 (H) x 1003 (W) x 483 (D) mm	

DRINKING FOUNTAINS

FREE STANDING TYPE

STANDARD FEATURES

- Dial-A-Drink, Adjustable Bubbler (Excluding Colorado)
- Waterways are Lead-Free in materials and construction
- Optional push handle glass filler (029603-004)
- Stainless steel finish with heavy-duty galvanized steel frame



*

*

*

*

10° C Drinking water/ 21° C Ambient air temp. 220-240 Volts, 50/60 Hz		Rated Capacity	Rated Watts	Net Weight	Dimensions
PLF8CPY	60 LPH	340 W	32 kg	1121 (H) x 305 (W) x 305 (D) mm	
COLORADO - P2KXY	19.5 LPH	90 W	22 kg	1020 (H) x 310 (W) x 310 (D) mm	
PLF8FAY	60 LPH	320 W	43 kg	1100 (H) x 432 (W) x 356 (D) mm	
PLF8FAHY	60 LPH	340 W	44 kg		

DRINKING FOUNTAINS

COUNTER TOP

- Anti-Splash ridge
- Built-in pressure regulator assures smooth, steady water flow
- Satin finish stainless steel



BRACKET MOUNTED

- Dial-A-Drink, Adjustable Bubbler
- Chrome-Plated brass strainer and tailpiece
- Stainless steel basin
- Satin finish stainless steel



ON-WALL TYPE (SINGLE)

- Dial-A-Drink, Adjustable Bubbler
- Stainless steel surfaces
- Anti-Splash ridge
- Easy-To-Clean integral strainer grid
- Bottom cover plate



FULLY RECESSED (SINGLE)

- Satin finish stainless steel surfaces
- Push-Button on cabinet front keeps water flowing while button is depressed
- Removable chrome-Plated brass drain strainer
- Built-in pressure regulator assures smooth, steady water flow



FLF300R

10° C Drinking water/
21° C Ambient air temp.
220-240 Volts, 50/60 Hz

Rated Capacity
Rated Watts
Net Weight
Dimensions

-
-
3 kg
305 (H) x 356 (W) x 354 (D) mm

FLF120

-
-
3 kg
233 (H) x 330 (W) x 333 (D) mm

F100

-
-
7 kg
225 (H) x 432 (W) x 331 (D) mm

FLF211PM

-
-
17.9 kg
889 (H) x 457 (W) x 13 (D) (267 recessed) mm

CONVERSION KIT

DRINKING FOUNTAIN TO BOTTLE FILLER

STANDARD FEATURES

Convert an existing Drinking Fountain to a Bottle Filler in moments.

- Contactless activation with shut off timer
- Large Alcove to fit most sports bottles
- Built in drain - no drip tray to empty
- Side access panels to filters
- Heavy duty galvanized steel frame
- Waterways are Lead-Free in materials and construction
- Brushed stainless steel finish



NNEBFEZ



NNEBFPG

10° C Drinking water/
21° C Ambient air temp.
220-240 Volts, 50/60 Hz

Rated Capacity
Rated Watts
Net Weight
Dispense Height
Dimensions

-	-
7 W	7 W
11.3 kg	10 kg
292 mm	330 mm
960.2 (H) x 453.2 (W) x 331.8 (D) mm	

*All performance data measured with 18°C inlet water temperature. Specifications subject to change without notice. ANSI/NSF 61 and CABO/ANSI A117.1 are applicable to all models.

ACCESSORIES

WATER CHILLER

- Easy Installation
- Waterways are Lead-Free in materials and construction
- High efficiency stainless steel cooling tank
- Made of heavy-gauge steel
- Refrigerant R-290a



	RLF8Y	R2Y
10° C Drinking water/ 21° C Ambient air temp. 220-240 Volts, 50/60 Hz	Remote or In-A-Wall	Remote or In-A-Wall
Rated Capacity	60 LPH	19.5 LPH
Rated Watts	340 W	95 W
Net Weight	24 kg	14.6 kg
Dispense Height	406 (H) x 417 (W) x 262 (D) mm	435 (H) x 282 (W) x 399 (D) mm

BUBBLERS



Antimicrobial Water Saver Flex Type

One-piece, tamper-proof, non-regulated antimicrobial bubbler for table-type drinking fountains and Radian models

Part no.035607-111



Metal

Tamper-proof, chrome plated brass, and non-regulated antimicrobial bubbler for table-type drinking fountains and Radian models

Part no.0356700-001



Adjustable (Flexible guard)

Dial-A-Drink Adjustable Bubbler with Flexible Bubbler Guard

Part no.030774-006
Mains water pressure 20-110 psi
Part no. 030774-015
Mains water pressure <20 psi



Adjustable (Chrome plated guard)

Dial-A-Drink Adjustable Bubbler with Flexible Bubbler Guard

Part no.030774-016
Mains water pressure 20-110 psi



Constant Flow

Constant flow bubbler with flexible bubbler guard

Part no.030774-025

ETC.



OASIS Green Filter can be factory installed at an extra cost
Ask for our green Filter price list and description.



Colorado Glass Filler

Chrome Glass Filler for the Colorado (P2KXY) Free Standing Cooler

Part no.034912-001



Glass Filler

Chrome Glass Filler Assy, Push Handle

Part no.029603-004

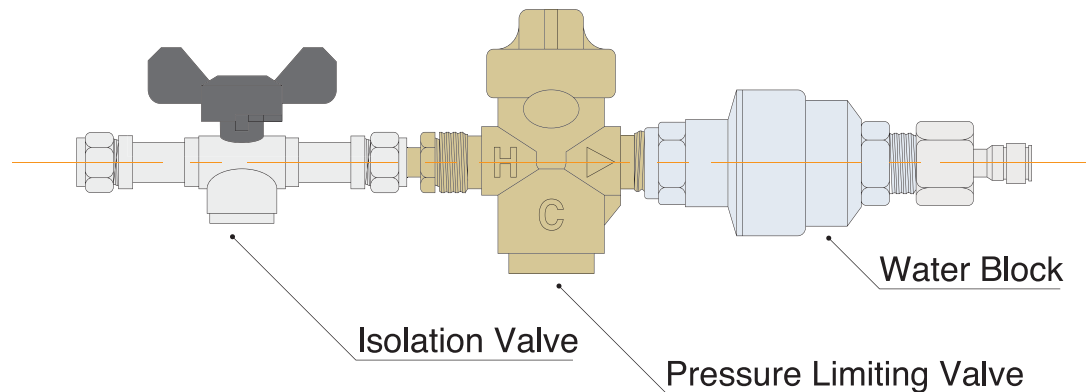


Trim Bezel

Trim Bezel fits OASIS P8AC Coolers

Part no.035173-003
Stainless Steel

INSTALLATION KIT



(Compression Fitting Version 034653-003)

This kit is an 'all in one rail', which when properly installed will regulate the feed water used to supply a water dispensing device.

The kit includes an isolation valve with double non return, a pressure limiting valve set at 3 bar and a water block, which will stop the water flow if a pre set volume has been exceeded. The inlet of the kit is 15mm compression and the outlet is 1/4" push fit.

This kit should only be fitted to a mains cold water supply / boosted mains, not a tank fed supply.

The kit features twin 'type approved' non return valves and thereby complies with the current WRAS / EPDWA regulations for supplying coolers and carbonators.

INSTALLATION PROCEDURE

The feed water kit should be fitted to a suitable 15mm mains cold water pipe made of copper. Alternative kits are available for plastic pipe work, please consult your supplier. The pipe work should be clean, free from bends / dents and should not be painted. The kit should be mounted vertically and in a position to allow for the access to individual components, for altering the settings.

ALTERING THE SETTINGS

To alter the maximum feed water pressure, turn the slot on top of the chrome pressure limiting valve either clock / anti – clockwise.

To alter the maximum volume of water to be discharged in any given instance, firstly remove the 3/4" x 1/4" adaptor from the outlet of the grey water block device. Inside the outlet there is a pointer that can be aligned with one of the figures around the circumference. Each figure equates to 1 gallon (3.8 litres). A standard kit is set on 2 (i.e. 9 litres). The maximum setting is approximately 50 litres.

FILTERS



EZ Clip (In-line) Green Filter

- Connected to flexible water tubing with a simple push into-place fitting at the top and bottom of the filter
- The filter body is secured to the wall by pushing it into a C-Clip
- Ideal in situations where simplicity and space are a priority



EZ Turn (Quarter-turn) Green Filter

- Connected to flexible water tubing with a simple push into-place fitting at the water entry and exit valves in the head of the filter
- A no-spill valve allows to disconnect the filter body from the filter head without spilling any water
- The filter body is installed into the head with a simple quarter-turn

Improve the taste and quality of Your Drinking Water with OASIS Green Filter System

LIMIT WASTE WITH SUSTAINABLE & HEALTHY HYDRATION

- Interchangeable filter media.
- Reusable housing reducing significant waste in comparison to alternative filters on the market.
- Simple installation.
- Easy maintenance with filter changes every 6 months.
- Two filter housing designs for a perfect fit in any environment.
- Cleaning Cartridge: replace filter media with sanitizing solution to create a cleaning cartridge that can be used to sanitize all water contact surfaces inside your mains-fed machine.
- OUTSIDE-IN filtration for maximum filtration efficiency with a minimal drop in pressure and low risk of blockage.



The OASIS green filter range of products are tested in accordance with NSF/ANSI Standard 42 for Chlorine, Taste & Odour and, where stated, NSF/ANSI Standard 53 for Cyst.



green[®]
filter

The OASIS Green Filter System is a patented reusable system.

FILTERS

Cartridge Type	SEDIMENT	CARBON BLOCK	CARBON / PHOSPHATE	CARBON / SILVER / PHOSPHATE	CERAMIC	GALAXI	GALAXI / PHOSPHATE	REMEDEI	REMEDEI / PHOSPHATE
μ rating [μm]	5	1	1	1	0.5	0.5	0.5	1.4 - Equiv. to 0,2	1.4 - Equiv. to 0,2
CTO (L)	—	3 800	3 800	19 000	—	6 500	6 500	2,800	2,800
Scale Reduction (polyphosphate beads)	—	—	26 000	26 000	—	—	26 000	—	26 000
Sediment reduction	+	+	+	+	+	+	+	+	+
Lead reduction (L)	—	—	—	—	—	10 000	10 000	830 at pH 8,5	830 at pH 8,5
Cyst reduction	—	—	—	—	+	+	+	+	+
Antimicrobial	—	—	—	25 000	+	25 000	25 000	+	+
Pathogenic bacteria, micro-organisms reduction	—	—	—	—	+	+	+	+	+
Viruses reduction	—	—	—	—	—	—	—	+	+
Pharmaceutical + Chemical waste reduction (L)	—	—	—	—	—	—	—	100 000	100 000

Outdoor Filter	
AIR TEMP.	2°C to 50°C
FLOW RATE	5.68 LPM
PRESSURE	1.4 bar to 8.6 bar
CAPACITY	17,980 L
SERVICE LIFE	12 months
SEDIMENT	Down to nominal 0,5 micron
FUNCTION	Mechanical / Chemical filtration
INSTALL LOCATION	For outdoor use



TRUSTED BY MANY





Get In Touch

www.oasiscoolers.eu
info@oasis.ie